

SunSense Survey

Knowledge—True or False

- | | | |
|---|---|---|
| 1. Using a hat with a wide brim and sunglasses may keep you from having eye damage? | T | F |
| 2. You should put on sunscreen 20 minutes before going out in the sun. | T | F |
| 3. There is a safe way to get a tan from the sun. | T | F |
| 4. You cannot get sunburned on a cloudy day. | T | F |
| 5. You should do a skin self exam every month. | T | F |
| 6. People with olive or brown skin can get skin cancer. | T | F |

Personal Behaviors

- | | | | |
|--|---------------|-----------|--------|
| 1. I think I look better with a suntan. | Never | Sometimes | Always |
| 2. I like putting on sunscreen. | Never | Sometimes | Always |
| 3. When out in the sun, I try to get a tan. | Never | Sometimes | Always |
| 4. When out in the sun, I try to stay in shade. | Never | Sometimes | Always |
| 5. When out in the sun, I wear a hat. | Never | Sometimes | Always |
| 6. When out in the sun, I wear sunglasses. | Never | Sometimes | Always |
| 7. I wear sunscreen with an SPF of 30 or more when I go outside | Never | Sometimes | Always |
| On a weekday, how much time do you usually spend in the sun? | Less than 1hr | 1-2hrs | 2hrs+ |
| On a weekend day, how much time do you usually spend in the sun? | Less than 1hr | 1-2hrs | 2hrs+ |



SunSense Survey

Points System

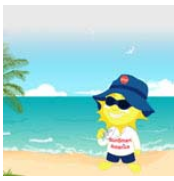
Attitude

Do you think...

People look healthier with a tan	Y = 1	N = 2
People look more attractive with a tan	Y = 1	N = 2
Tanning in a tanning salon is safe	Y = 1	N = 2
You should worry about getting skin cancer	Y = 2	N = 1
Sun exposure is healthy	Y = 1	N = 2
Taking risks is enjoyable	Y = 1	N = 2
Being attractive is important	Y = 1	N = 2
Protecting your skin from sun damage is a priority	Y = 1	N = 2

Knowledge

1.	T = 2	F = 1
2.	T = 2	F = 1
3.	T = 1	F = 2
4.	T = 1	F = 2
5.	T = 2	F = 1
6.	T = 2	F = 1



SunSense Survey

Personal Behaviors

- | | | | |
|----|-------------------|---------------|------------|
| 1. | Never = 3 | Sometimes = 2 | Always = 1 |
| 2. | Never = 1 | Sometimes = 2 | Always = 3 |
| 3. | Never = 3 | Sometimes = 2 | Always = 1 |
| 4. | Never = 1 | Sometimes = 2 | Always = 3 |
| 5. | Never = 1 | Sometimes = 2 | Always = 3 |
| 6. | Never = 1 | Sometimes = 2 | Always = 3 |
| 7. | Never = 1 | Sometimes = 2 | Always = 3 |
| 1. | Less than 1hr = 3 | 1-2hrs = 2 | 2hrs+ = 1 |
| 2. | Less than 1hr = 3 | 1-2hrs = 2 | 2hrs+ = 1 |

Points

55—45 = Sun—SENSE—ational

44—34 = Sun—SENSE—able

33—23 = Sun—SENSE—less